

Luxury Japan Nov, 2007 November 12th to 25th 2007



This tour includes the best of everything Japan has to offer. It is designed for newcomers to Japan who want first class hotels and follows a leisurely pace starting with 3 full days in Kyoto and Nara. This is the season when the wooded mountains come ablaze with autumn colour.

Accordingly the tour starts with a visit to Kiyomizu Temple lit up in the evening to show off the wonderful autumn orange, and red foliage of the maple trees. The temple sits in the mountain side above Kyoto affording us fantastic night views of the city. We can also enjoy a nationwide festival, Shichigosan (literally 7-5-3), when 7, 5 and 3 year old children dress up in tiny kimonos and suits and visit the local temples for their blessing.

All the details in the schedule and hotel accommodation will be reconfirmed 60 days before departure.

Further Luxury Japan Tours in 2008

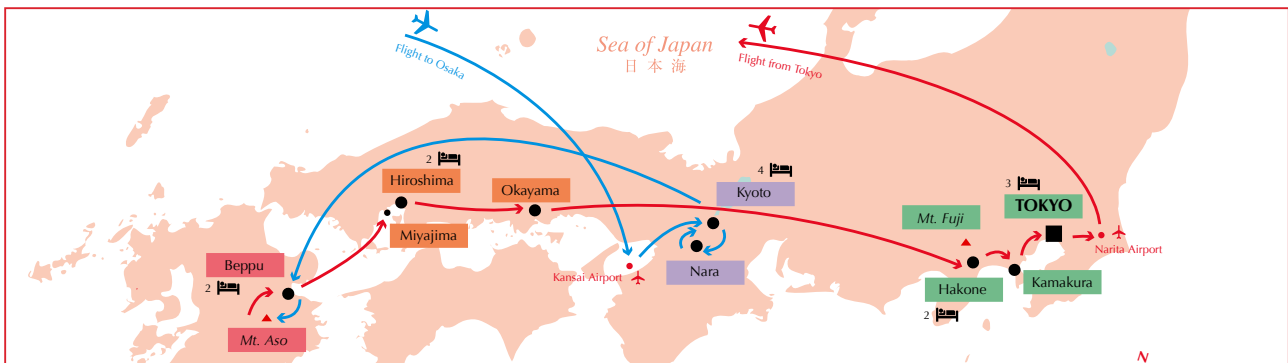
30 March - 12 April feat. cherry blossom festival in Kyoto

20 October - 2 Nov feat. Jidai Matsuri and Kurama Fire festival

10 - 23 November featuring Kiyomizu illumination and Shichigosan

See www.tourstojapan.com for further details

15 day tour to experience Japan's most spectacular locations



Tour itinerary

Day	Schedule	Main Transport	Accommodation	Meals
Nov 12th	Met at the airport and transfer to Kyoto for the start of the tour.		Kyoto hotel	
Nov 13th	The morning is spent at the Golden Temple and Ryoanji and from there we go to Arashiyama to stroll through the gigantic bamboo groves and temples by the Katsura River.	Coach	Kyoto hotel	B
Nov 14th	We visit Gion home of the geisha before a walking tour of the temples and shrines around Maruyama Park. In the evening we go up to the stilted Kiyomizudera to see the illuminated fiery autumn maple trees and enjoy the night views across and over Kyoto.	Walking / Taxi	Kyoto hotel	B
Nov 15th	We spend a full day in Nara deer Park, visiting Todaiji Temple and the shrines on the wooded hillside. We will have ample opportunity to see the Japanese children dressed up for Shichigosan in their beautiful miniature kimonos.	Local Train	Kyoto hotel	B
Nov 16th	Our first ride on Shinkansen (bullet train) takes us west and to Beppu. Japan's most famous hot spring town. Experience the hospitality and fantastic traditional food in our Japanese Inn.	Bullet train	Beppu Japanese Inn	B, D
Nov 17th	We visit Mount Aso taking our coach to the peak of the active volcano. From there we visit several vantage points to enjoy the spectacular views of the vast caldera surrounding it. Enjoy the hot spring baths in the evening before savouring the cuisine at our traditional accommodation.	Coach	Beppu Japanese Inn	B, D
Nov 18th	You have another opportunity to enjoy a traditional breakfast before the train journey back east towards Hiroshima. In the afternoon we spend the afternoon visiting the Atomic Dome and Peace Park.	Bullet train	Hiroshima hotel	B
Nov 19th	A leisurely day is spent on Miyajima island, visiting the famous temple and torii gate, with time to walk up to the island peak or browse through the village and shops.	Tram/Ferry/Taxi	Hiroshima hotel	B
Nov 20th	We stop by Okayama and the famous Korakuen, one of Japan's three famous stroll gardens, on our way to Hakone.	Bullet train	Hakone hotel	B
Nov 21st	We have a day to enjoy the views of Mount Fuji. The 'Scenic' travel pass will allow us to take the cable car, tram and a steam boat ride on the lake.	Tram/Cable Car/Steamer	Hakone hotel	B
Nov 22nd	We spend a few hours in Kamakura, visiting the giant buddha and enjoying views out to the Pacific Ocean, before our final destination, Tokyo.	Bullet train	Tokyo hotel	B
Nov 23rd	We visit Tokyo's oldest temple, Asakusa Kannon and the Imperial Palace Gardens. Visits in the afternoon to the shopping districts could also be described as sightseeing as we marvel on the advanced electronic 'toys' on offer.	Metropolitan train	Tokyo hotel	B
Nov 24th	An early morning at the Tokyo fish market before breakfast. For the rest of the day you have the choice of sightseeing or you can take time to have your own adventure and make the most of the final chance for shopping.	Metropolitan train	Tokyo hotel	B
Nov 25th	Transfer to airport for departure.			

Luxury Japan

Luxury Japan, Nov 2007 *Tour Price and Booking Details*

Price per person: £2895/ US\$5790/ €4487

*Single supplement £595 (\$1090 / €922)

**A single supplement is necessary to guarantee a single room, otherwise single bookings may be in a twin room with other clients of the same sex*

Minimum number of people: 10

Maximum number of people: 16

The tour is guaranteed as soon as we receive 10 guaranteed bookings. In the unlikely event there are less than 10 confirmed bookings 60 days before departure the tour may be cancelled or offered to you with modified conditions.

Please note that there is a small chance that the price will change due to taxes or the pound - yen exchange rate (see booking conditions). However all prices are guaranteed from 60 days before departure.

Tour Dates & flight details

Sunday 12th November, 2007 to Sunday 25th November, 2007

Tour Escorts: David Lee (UK office) and Megumi Masuda (Japan Office)

Included in Tour Package Price

- *Emergency assistance from our Japan Office throughout tour*
- *Local Japanese guides in addition to group escort above*
- *All accommodation (total 13 nights in Japan)*
- *All meals as shown on itinerary (13 breakfast, 0 lunch, 2 dinner)*
- *All transport except during free time as shown on itinerary*
- *All entry fees and any other necessary fees and tips except during free time (Free time when you may need to pay some transport/entry fees on this tour is on the final full day in Tokyo)*

Not included in the Tour Package Price

- *International flights*
- *Travel Insurance*
- *Meals not listed on brief itinerary*
- *Incidental costs such as personal laundry, drinks, snacks*
- *Passport and other visa document fees*
- *Any baggage excess (over 20kg on economy flights)*

Full tour details including confirmed hotels will be sent to you by 12th September 2007.

Optional extras

We will be happy to make a personal quote for any of the following:

- *Requests for additional services during the tour including theatre tickets*
- *Additional accommodation or personal tours before or after the scheduled tour*

Bookings

Bookings are confirmed by sending a signed and completed booking form which includes all participants and making the deposit payment of £500/ US\$1000/ €750 by cheque, bank transfer or credit card.

Once we have received the booking form and the deposit payment has been cleared we will send you booking confirmation with tour details within 2 working days.

We can accept a provisional booking which hold a place on the tour. To keep a provisional booking we must receive a completed booking form within 7 days. This will be held until you confirm or cancel. If we contact you before that, you will be given at least 7 days to decide. If you wish to confirm we must receive your deposit as cleared funds within 14 days.

Into Japan Specialist Tours is a trading name of Oxford International Exchange Ltd. Oxford International Exchange Ltd is a fully licensed and bonded tour operator. We hold an Air Travel Organisers License (ATOL) no. 6977 issued by the Civil Aviation Authority.



For any queries contact Into Japan Specialist Tours



www.tourstojapan.com

Tel: +44 1865 841443

Email: info@tourstojapan.com